

136x125mm 136x275mm



SWITCHED INTERLOCKED SOCKET OUTLETS

OMNIA Series

SWITCH-DISCONNECTORS

ISOLATORS-TP Series

Poles	A	Volt	Colour	Without fuse carrier		With fuse carrier	
				IP44	IP66/IP67	IP44	IP66/IP67
2P+E	16	200-250	Blue	400.1683	405.1683	401.1683	406.1683
	32	200-250	Blue	400.3283	405.3283	401.3283	406.3283
	63	200-250	Blue	-	405.6383(*)	-	-
3P+E	16	380-415	Red	400.1686	405.1686	401.1686	406.1686
	32	380-415	Red	400.3286	405.3286	401.3286	406.3286
	63	380-415	Red	-	405.6386(*)	-	-
3P+N+E	16	346-415	Red	400.1687	405.1687	401.1687	406.1687
	32	346-415	Red	400.3287	405.3287	401.3287	406.3287
	63	346-415	Red	-	405.6387(*)	-	-

(*) 63A- Flange: 136x275mm

DOMESTIC SWITCHED INTERLOCKED SOCKET OUTLETS

OMNIPLUS Series

Poles	A	Volt	Standard	Without protection		Fuse (*)		MCB		RCBO	
				IP56	IP56	IP56	IP56	IP56	IP56		
2P+E	16	250	GERMAN	409.0407	409.1407	409.2407	409.3407	-	-	-	-
	16	250	FRENCH	409.0411	409.1411	409.2411	409.3411	-	-	-	-
	13	250	BRITISH BS1363	409.0413	409.1413	409.2413	409.3413	-	-	-	-
	6-16	250	INDIAN	409.0429	409.1429	409.2429	409.3429	-	-	-	-
	10	250	NEW ZEALAND	409.0427	409.1427	409.2427	409.3427	-	-	-	-
	16	250	SOUTH AFRICAN	409.0428	409.1428	409.2428	409.3428	-	-	-	-

(*) 10A - 250V-

70x87mm 84x106mm 50x60mm



FLUSH MOUNTING SOCKET OUTLETS

OPTIMA Series

FRONT OPERATORS HANDLES

COMMAND Series

Poles	A	Volt	Colour	Flange 70x87 mm		Flange 84x106 mm	
				IP44/IP54	IP66/IP67/IP69	IP44/IP54	IP66/IP67/IP69
2P+E	16	200-250	Blue	413.1663	418.1663	413.3263	418.3263
	32	200-250	Blue	-	-	413.3263	418.3263
	63	200-250	Blue	-	-	-	-
3P+E	16	380-415	Red	413.1666	418.1666	413.1666	418.1666
	32	380-415	Red	-	-	413.3266	418.3266
	63	380-415	Red	-	-	-	-
3P+N+E	16	346-415	Red	413.1667	418.1667	413.1667	418.1667
	32	346-415	Red	-	-	413.3267	418.3267

Description	Switch disconnectors	Colour	Flange 70x87 mm
Suitable for panel mounting version R	16A, 32A, 40A	Blue	590.YM70R1
	63A, 80A	Blue	590.YM70R2
	100A	Blue	590.YM70R7

DOMESTIC SOCKET OUTLETS

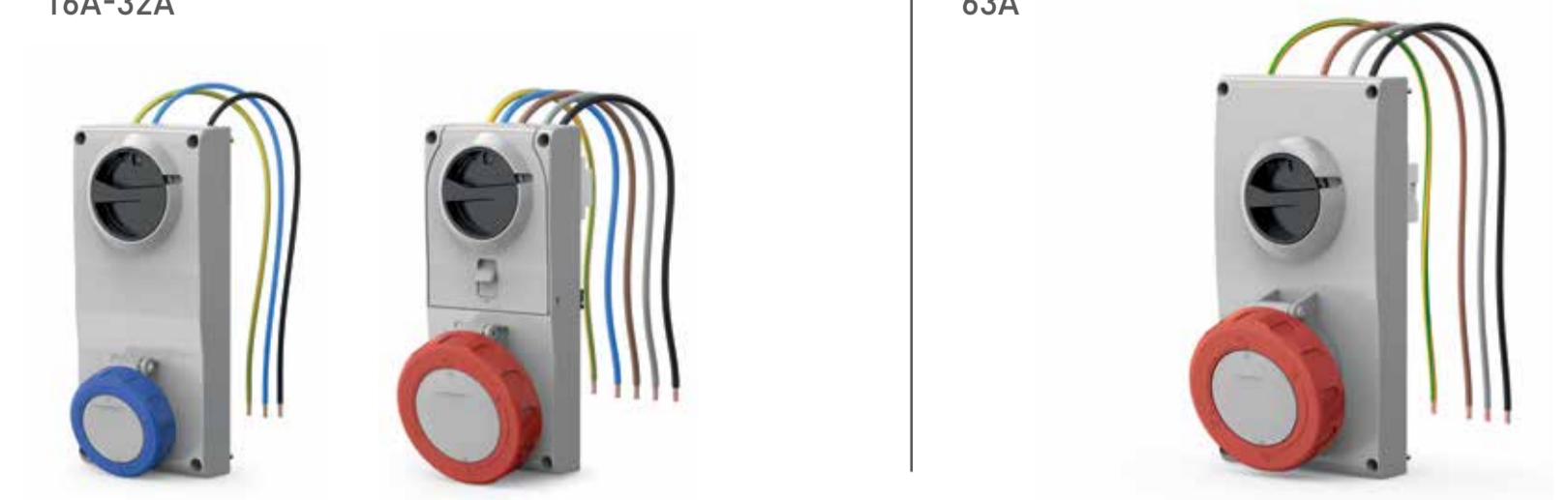
DOMO/DOMOPLUS Series

ACCESSORIES

Poles	A	Volt	Standard	Flange 50x60 mm		Flange 70x87 mm	
				IP54	IP66	IP54	IP66
2P+E	16	250	GERMAN	570.2062	570.4062	570.6407	570.6411
	16	250	FRENCH	570.2091	570.4091	570.6411	570.6411
	13	250	BRITISH BS1363	570.2041	570.4041	570.6413	570.6413
	15	250	BRITISH BS546	-	-	570.6414	570.6414
	10	250	NEW ZEALAND	-	-	570.6427	570.6427
	16	250	SOUTH AFRICAN	-	-	570.6428	570.6428

Description	Flange 70x87 mm	Flange 84x106 mm	Flange 50x60 mm
Blank plate for panel cut outs	654.0100		
75x75mm flange adaptor	654.0108		
Cabinet fixing DOMO Series (50x60mm) on distribution assemblies ENERBOX Series	570.2001		

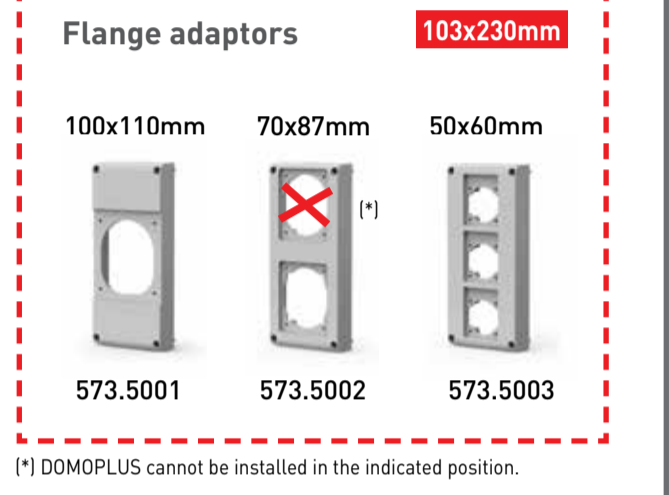
103x230mm 136x275mm



SWITCHED INTERLOCKED SOCKET OUTLETS

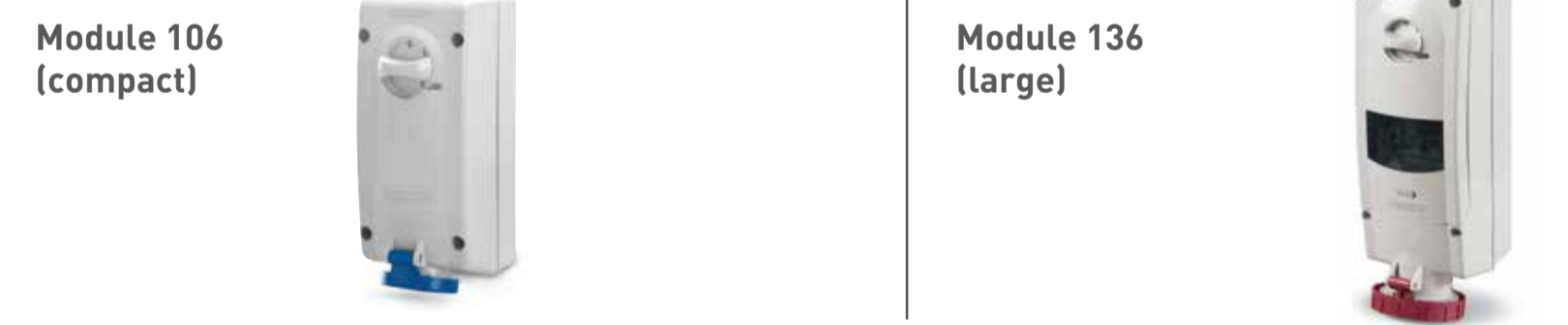
PROXIMA Series

Poles	A	Volt	Colour	Flange adaptors 103x230mm	
				100x110mm	70x87mm
2P+E	16	200-250	Blue	407.1683	408.1683
	32	200-250	Blue	407.3283	408.3283
	63	200-250	Blue	407.6383	-
3P+E	16	380-415	Red	407.1686	408.1686
	32	380-415	Red	407.3286	408.3286
	63	380-415	Red	407.6386	-
3P+N+E	16	346-415	Red	407.1687	408.1687
	32	346-415	Red	407.3287	408.3287



Components	PROXIMA System					
	5 DIN (63A) 7 DIN	10 DIN	16 DIN	24 DIN	24 DIN	24 DIN
16A-32A	573.5100	573.5110	573.5120	573.5130	573.5111	573.5121
63A	-	573.5210	-	-	573.5211	-
16A-32A-63A	-	-	-	-	-	573.5351

106x240mm 136x390mm



SWITCHED INTERLOCKED SOCKET OUTLETS

ADVANCE2 Series

OMNIA Series

Poles	A	Volt	Colour	Without fuse carrier			With fuse carrier		
				IP44	IP66/IP67	IP66/IP67	IP44	IP66/IP67	IP66/IP67
2P+E	16	200-250	Blue	560.1683	561.1683	562.1683	563.1683	567.1683	568.1683
	32	200-250	Blue	560.3283	561.3283	562.3283	563.3283	567.3283	568.3283
	63	200-250	Blue	-	561.6383	-	563.6383	-	568.6383
3P+E	16	380-415	Red	560.1686	561.1686	562.1686	563.1686	567.1686	568.1686
	32	380-415	Red	560.3286	561.3286	562.3286	563.3286	567.3286	568.3286
	63	380-415	Red	-	561.6386	-	563.6386	-	568.6386
3P+N+E	16	346-415	Red	560.1687	561.1687	562.1687	563.1687	567.1687	568.1687
	32	346-415	Red	560.3287	561.3287	562.3287	563.3287	567.3287	568.3287

Components	ADVANCE2 System					Distribution assemblies	MBOX Series
	compact 4 DIN	compact 10 DIN	large 6 DIN	large 13 DIN	MBOX5		
Module 106 (compact)	576.4300	576.4301	576.4304	576.4302	576.4305	658.0050-000 658.0051-000	
Module 136 (large)	576.4340	576.4321	576.4324	576.4322	576.4325		



Components OMNIA System

572.0220	572.0200	572.0205	572.0310*	572.0322	572.0308	572.0312	572.0314	572.0316	572.0311	572.0313	572.0315
----------	----------	----------	-----------	----------	----------	----------	----------	----------	----------	----------	----------

*572.0309 for 32A sockets with fuse

Distribution assemblies MBOX Series

MBOX2	MBOX3	MBOX5	Flange adaptors 136x125mm	
654.0024-000 654.0924-000	657.0035-000 657.0036-000 657.0037-000	657.0935-000 657.0936-000 657.0937-000	654.0125	654.0126

Distribution assemblies DOMINO IP66 Series

672.1200	672.2200	672.3200	672.4216	672.5316	672.5416	672.5522	672.5622
----------	----------	----------	----------	----------	----------	----------	----------

Distribution assemblies ENERBOX Series Components DOMO Series

654.0026-000 654.0926-000	657.0038-000 657.0938-000	657.0039-000 657.0939-000	633.1011	633.1012	633.2021	633.2022	633.2023	570.0016	570.0032	570.0116	570.0132
------------------------------	------------------------------	------------------------------	----------	----------	----------	----------	----------	----------	----------	----------	----------

Distribution assemblies DOMINO IP66 Series

672.1301	672.1300	672.2300	672.2301	672.3300	672.3302	672.4316	672.5616	672.5622	672.5822
----------	----------	----------	----------	----------	----------	----------	----------	----------	----------

Distribution assemblies BLOCK Series

632.1500-000	632.3500-000	632.3520-000	632.3530-000	632.3501-000	632.4500-000	632.4520-000	632.4530-000	632.5520-000	632.5500-000
--------------	--------------	--------------	--------------	--------------	--------------	--------------	--------------	--------------	--------------

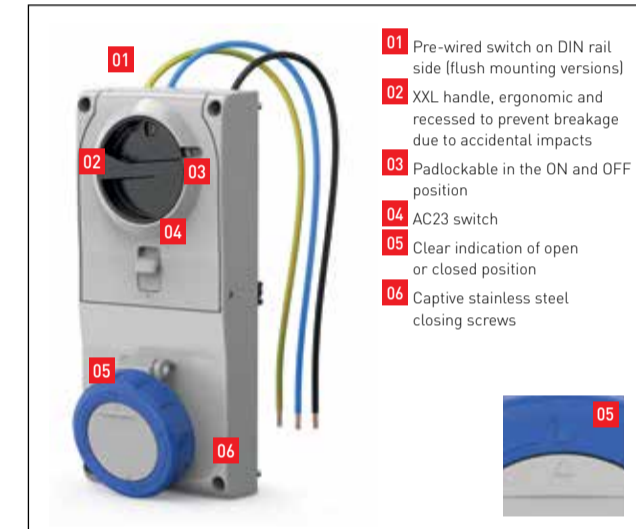
(*) DOMOPLUS cannot be installed in the indicated position.

PROXIMA SERIES
INDUSTRIAL SWITCHED INTERLOCKED
SOCKET OUTLETS >50V



TECHNICAL CHARACTERISTICS

Rated current:	16A-32A-63A
Rated voltage:	>50+690V
Frequency:	50/60Hz - 60Hz - 100-300Hz - >300 - 500Hz - c.c.
Insulating voltage:	2P+E 500V 3P+E / 3P+N+E 690V
Protection degree:	IP44/IP66/IP67
Installation temperature:	-25°C +60°C
Enclosure material:	Thermoplastic (Halogen Free)
Colour:	Grey RAL7004
Self extinguishing degree (GWT):	650°C (body) 850°C (socket contact carrier) 960°C (switch)
Impact resistance (IK degree):	16A-32A IK10 63A IK09
Fuses:	16A-32A gG 10,3x38mm
Insulation class:	Class II (double insulation) <input checked="" type="checkbox"/>
Auxiliary contacts:	Max 2 auxiliary contacts
Handle lock (with padlock):	OFF and ON
Padlock arch diameter to be used:	16A-32A 5mm 63A 6mm



ADVANCE2 SERIES
INDUSTRIAL SWITCHED INTERLOCKED
SOCKET OUTLETS >50V



TECHNICAL CHARACTERISTICS

Rated current:	16A-32A-63A
Rated voltage:	>50+690V
Frequency:	50/60Hz - 60Hz - 100-300Hz - >300 - 500Hz - c.c.
Insulating voltage:	2P+E 500V 3P+E / 3P+N+E 690V
Protection degree:	IP44 - IP66/IP67
Installation temperature:	-25°C +60°C
Enclosure material:	Thermoplastic (Halogen Free)
Colour:	Grey RAL7035
Self extinguishing degree (GWT):	650°C (body) 850°C (socket contact carrier) 960°C (switch)
Impact resistance (IK degree):	IK07
Fuses:	16A - 32A gG 10,3x38mm 63A Neozed type D02
Insulation class:	Class II (double insulation) <input checked="" type="checkbox"/>
Auxiliary contacts:	Max 2 auxiliary contacts
Handle lock (with padlock):	OFF and ON
Padlock arch diameter to be used:	5mm



OMNIA SERIES
COMPACT INDUSTRIAL SWITCHED INTERLOCKED
SOCKET OUTLETS >50V



TECHNICAL CHARACTERISTICS

Rated current:	16A-32A-63A
Rated voltage:	>50+690V
Frequency:	50-500Hz, c.c.
Insulating voltage:	2P+E 500V 3P+E / 3P+N+E 690V
Protection degree:	IP44, IP66/IP67
Installation temperature:	-25°C +60°C
Enclosure material:	Thermoplastic (Halogen Free)
Colour:	Grey RAL7035
Self extinguishing degree (GWT):	650°C (body) 850°C (socket contact carrier) 960°C (switch)
Impact resistance (IK degree):	IK08
Fuses:	16A - 32A gG 10,3x38mm
Insulation class:	Class II (double insulation) <input checked="" type="checkbox"/>
Auxiliary contacts:	Max 2 auxiliary contacts
Handle lock (with padlock):	OFF and ON
Padlock arch diameter to be used:	4.7mm



OMNIPLUS SERIES
COMPACT DOMESTIC SWITCHED INTERLOCKED
SOCKET OUTLETS



TECHNICAL CHARACTERISTICS

Rated current:	6A-10A-13A-16A
Rated voltage:	250 V~
Frequency:	50/60Hz
Fuse:	10A - 250V~
MCB:	10A - 1P+N, C10, 3kA 16A - 1P+N, C16, 3kA
RCBO:	10A - 1P+N, C10, 10mA, 3kA 16A - 1P+N, C16, 10mA, 3kA
Protection degree:	IP56 [also with plug inserted]
Installation temperature:	-15°C +60°C
Cabling capacity of the terminals:	0,75mm ² +1,5mm ² (6A) 1mm ² +2,5mm ² (10A) 1,5mm ² +4mm ² (16A)
Self extinguishing degree (GWT):	650°C (body) 850°C (contact carrier)
Impact resistance (IK degree):	IK08
Colour:	Grey RAL 7035 (base) Tinted lid

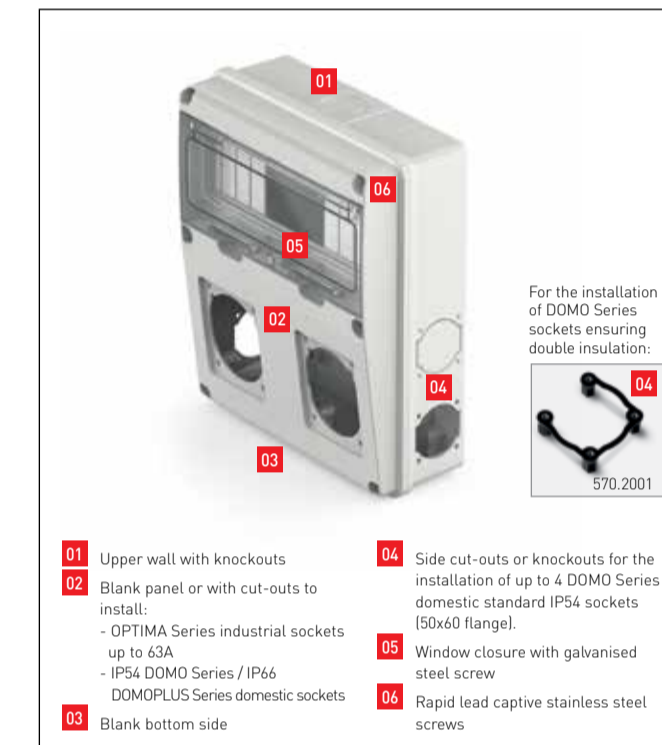


ENERBOX SERIES
EMPTY ENCLOSURES FOR DISTRIBUTION ASSEMBLIES
WITH FRONT AND SIDE SOCKETS



TECHNICAL CHARACTERISTICS

Protection degree:	IP55
Installation temperature:	-25°C +60°C
Self extinguishing degree (GWT):	650°C
Material:	Thermoplastic (Halogen Free)
Impact resistance (IK degree):	IK08
Cable entries:	PG16-PG21-PG29
Insulation class:	Class II (double insulation) <input checked="" type="checkbox"/>
Disippable power according to CEI 23-49 Standard:	Size 6 DIN 9W Size 11 DIN 15W
Colour:	Grey RAL7035

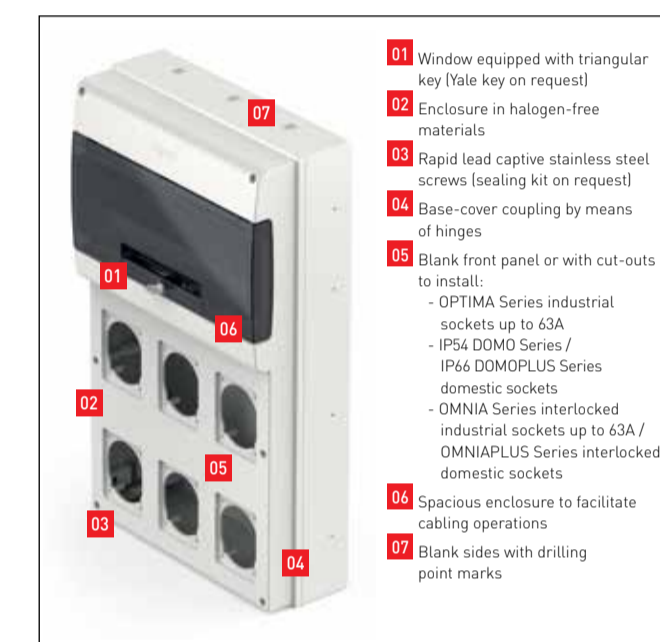


DOMINO IP66 SERIES
SURFACE MOUNTING WATERTIGHT
CONSUMER UNITS



TECHNICAL CHARACTERISTICS

Protection degree:	IP66
Installation temperature:	-25°C +60°C
Self extinguishing degree (GWT):	650°C
Material:	Thermoplastic
Impact resistance (IK degree):	IK07
Cable entries:	Blank side
Disippable power according to CEI 23-49 Standard:	6-60W
Colour:	Grey RAL 7035
Terminal blocks fixing possibility:	Yes
Insulation class:	Class II (double insulation) <input checked="" type="checkbox"/>



BLOCK SERIES
EMPTY ENCLOSURES
FOR COMPACT DISTRIBUTION ASSEMBLIES



TECHNICAL CHARACTERISTICS

Protection degree:	IP66
Installation temperature:	-25°C +60°C
Self extinguishing degree (GWT):	650°C
Material:	Thermoplastic
Impact resistance (IK degree):	IK08
Cable inlets:	Blank side
Insulation class:	Class II (double insulation) <input checked="" type="checkbox"/>
Disippable power according to CEI 23-49 Standard:	9W (BLOCK1) 9W (BLOCK4) 14W (BLOCK3) 15W (BLOCK5)
Colour:	Grey RAL 7035



DOMO/DOMOPLUS SERIES
SPASHPROOF AND WATERTIGHT DOMESTIC
SOCKET OUTLETS WITH PLUG INSERTED



TECHNICAL CHARACTERISTICS DOMO SERIES

Rated current:	10A-13A-16A-20A
Rated voltage:	250V~
Frequency:	50/60Hz
Protection degree:	IP54 (closed cover)
Installation temperature:	-25°C +60°C
Self extinguishing degree (GWT):	650°C (enclosure) 850°C (contact carrier)
Impact resistance (IK degree):	IK08
Material:	Thermoplastic (Halogen Free)
Cabling capacity of the terminals:	1mm ² +2,5mm ² (10A) 1,5mm ² +4mm ² (16A) 2,5mm ² +6mm ² (20A)

TECHNICAL CHARACTERISTICS DOMOPLUS SERIES

Rated current:	10A-13A-15A-16A
Rated voltage:	250V~
Frequency:	50/60Hz
Protection degree:	IP44 [also with plug inserted]
Installation temperature:	-25°C +60°C
Self extinguishing degree (GWT):	650°C (enclosure) 850°C (contact carrier)
Impact resistance (IK degree):	IK08
Material:	Thermoplastic (Halogen Free)
Colour:	Grey RAL 7035 (base) Tinted (cover)
Cabling capacity of the terminals:	1mm ² +2,5mm ² (10A) 1,5mm ² +2,5mm ² (13A-15A) 1,5mm ² +4mm ² (16A)



Examples of composition on distribution assemblies

DOMINO Series

BLOCK Series

ENERBOX Series

MBOX Series

INTEGRATED SYSTEMS



INTEGRATED SYSTEMS FOR ELECTRICAL INSTALLATIONS

Scame based its offer of solutions for energy distribution in the industrial sector on a systems concept. Taking advantage of standardized flange dimensions, the various devices can be mounted on dedicated modular bases or empty enclosures as well so to create combination units and distribution assemblies in flexible configurations based on the interaction between the various series in the catalogue.

PROXIMA System - Surface mounting industrial switched interlocked socket outlets
OMNIA System - Flush or surface mounting compact industrial switched interlocked socket outlets
ADVANCE2 System - Industrial switched interlocked socket outlets on modular plates

Examples of systems

PROXIMA System

ADVANCE2 System

OMNIA System

Try COMBIWIZARD the Scame online configurator which, in a simple and intuitive way, allows you to compose your own battery of interlocked sockets or distribution board. Starting from the series of empty enclosures or modular bases, in a few simple guided steps, it is possible to select the compatible sockets and devices to obtain the desired configuration.



SCAME PARRE S.p.A.
Via Costa Erta, 15 - 24020 Parre (BG) Italy
Tel. +39 035 705000 - Fax +39 035 703122



www.scame.com
export@scame.com

