



**400-440V
3h-3P+⊕**

Selection PRODUCTS FOR CONTAINERS

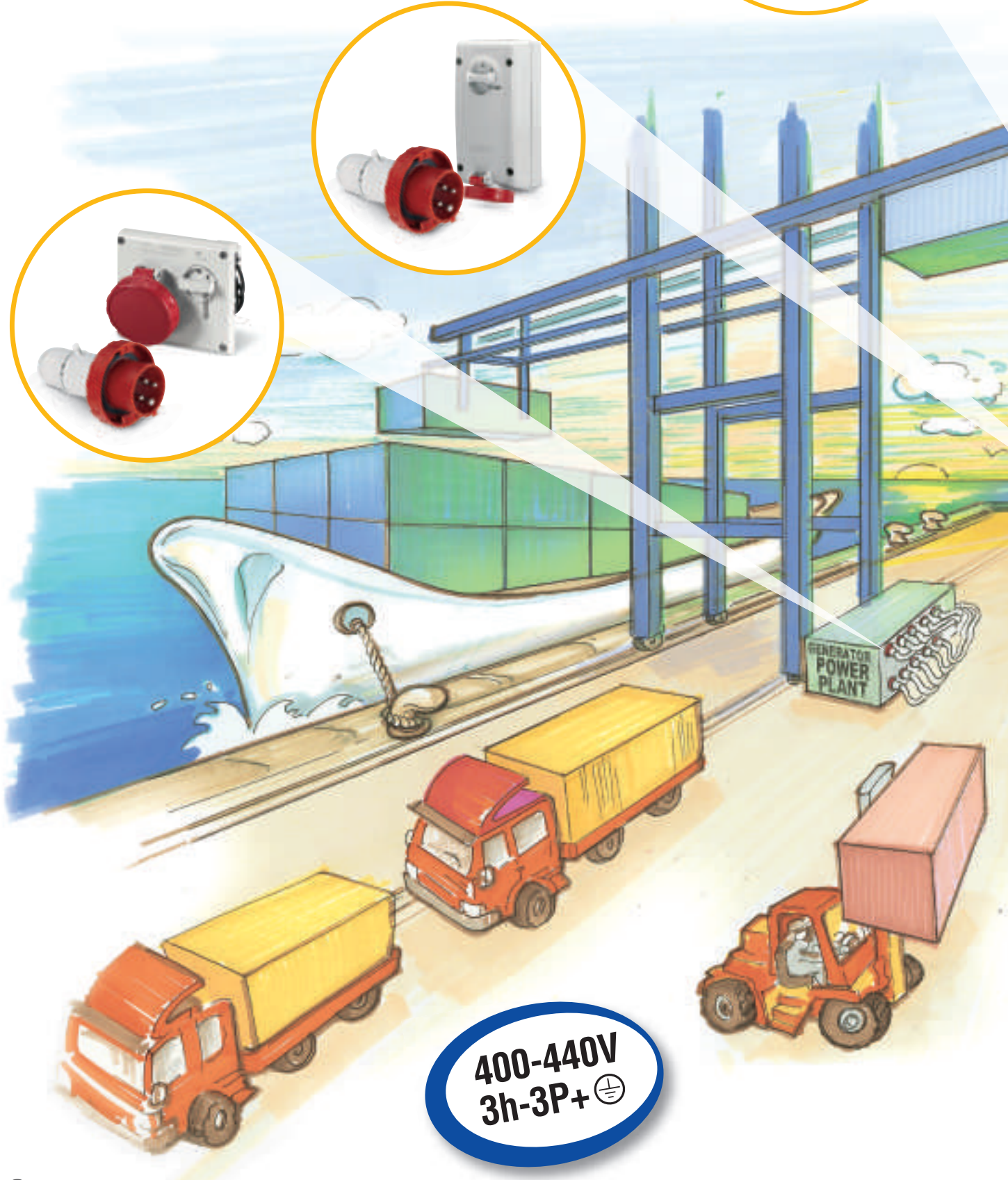
32A-400V Plugs and sockets



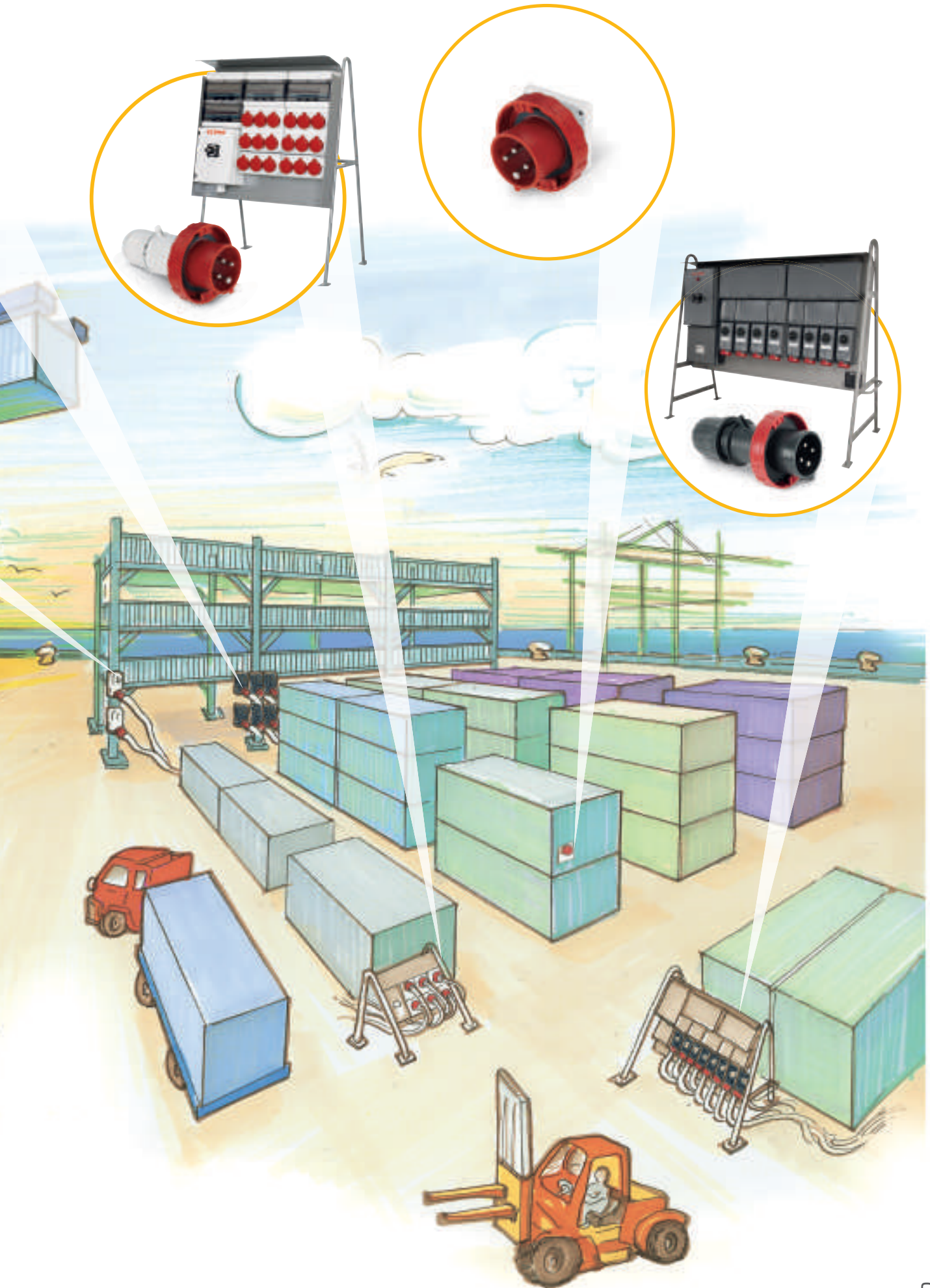
Products for CONTAINERS



Scame offers a wide range of specific products for powering refrigerated containers on ships and in ports. The product range includes plugs, sockets and assembled panels in thermoplastic or thermoset material.



400-440V
3h-3P+⊕



Products for CONTAINERS

> DOMINO ENCLOSURES AND OMNIA INTERLOCKED SOCKETS

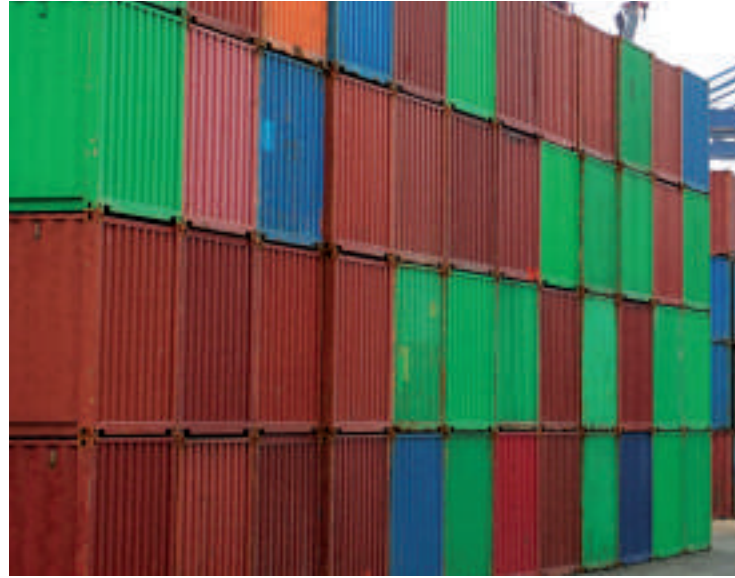
The modularity, compactness, sturdiness and high degree of protection of the **DOMINO Series** distribution assemblies makes them widely suited to meet a multitude of plant-engineering needs in normal and special environments. Made of impact-resistant and flame-retardant thermoplastic material with outstanding dielectric, thermal and mechanical characteristics, these panels guarantee a long service life and maximum operating safety, even in environments with a high concentration of corrosive agents.


CHARACTERISTICS:


Double insulation - Degree of protection: IP66

In the DOMINO distribution assemblies is it possible to install modular units with up to 16 DIN modules and up to 6 fixed sockets and 4 interlocked sockets with the possibility for further expansion.

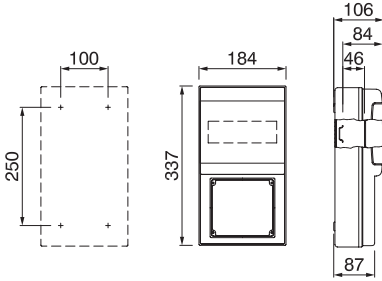
Reference standards: EN 60670-1 / EN 60439-1









Lockable

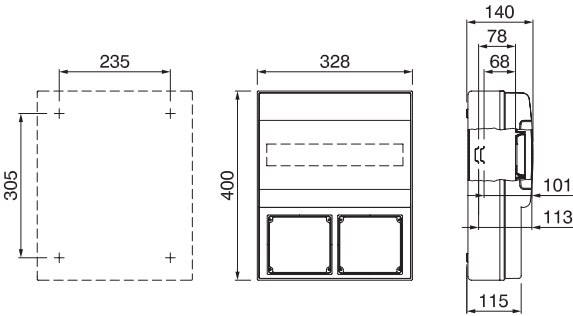


Example of a DOMINO distribution assembly: 1 OMNIA 32A socket / RCBO Protection / PG 36-29-21 (dimensions in mm)





Lockable



Example of a DOMINO distribution assembly: 2 OMNIA 32A sockets / RCBO Protection / PG 36-29-21 (dimensions in mm)

SCAME ALSO PROVIDES CUSTOMIZED CONFIGURATIONS ON REQUEST



Example of a DOMINO distribution assembly: 3 OMNIA 32A sockets / RCBO Protection / PG 36-29-21 (dimensions in mm)

Example of a DOMINO distribution assembly: 4 OMNIA 32A sockets / RCBO Protection / PG 36-29-21 (dimensions in mm)

SCAME ALSO PROVIDES CUSTOMIZED CONFIGURATIONS ON REQUEST

Products for CONTAINERS

> MEGA DISTRIBUTION PANELS

Equipped with a sturdy self-supporting metal structure in scratch-resistant painted steel with protective roof, the **MEGA Series** distribution panels are provided for the distribution of electricity with installed powers ranging from 90 kW to 370 kW.

CHARACTERISTICS

Junction boxes in thermoplastic material suited to contain

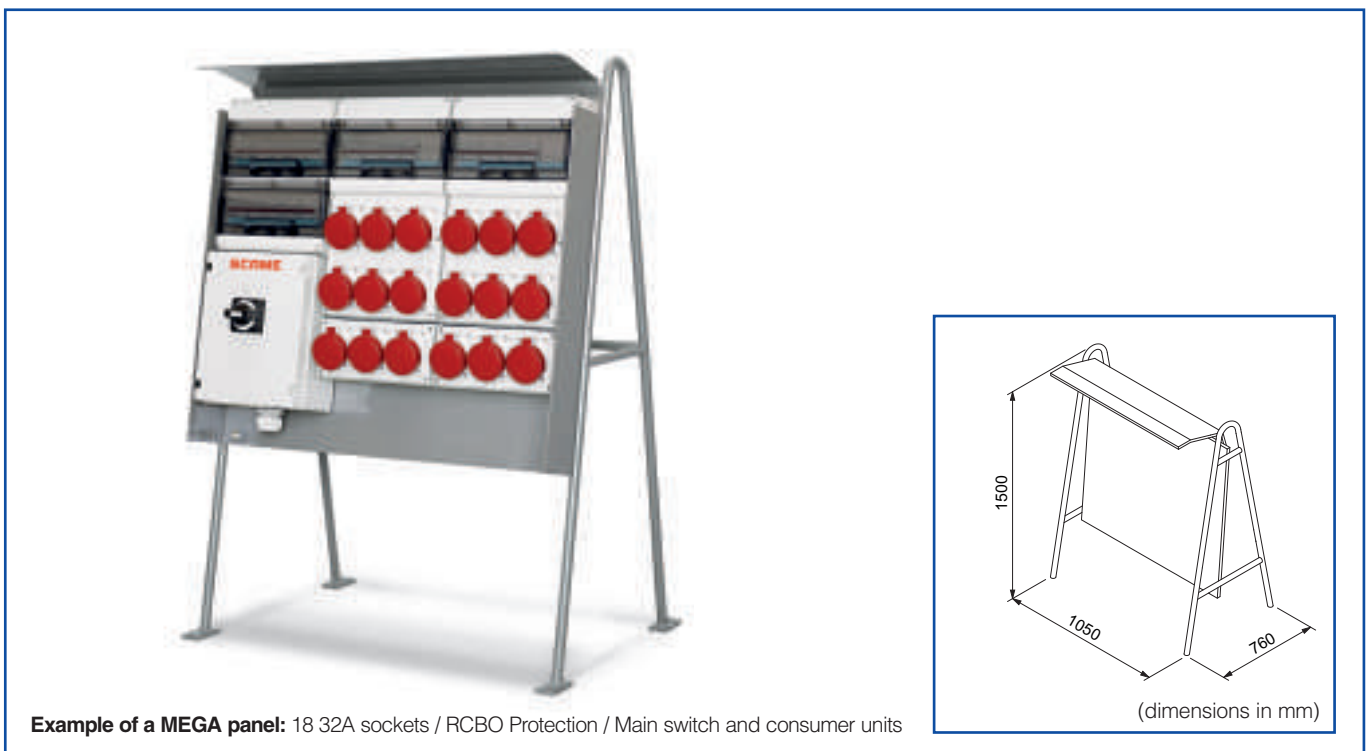
the main terminal board.

Consumer units for the installation of the protection devices (MCB, RCCB and RCBO).

Main protection by means of a lockable switch disconnecter or circuit breaker.

Degree of protection: IP55

Reference standards: EN 60439-4 / EN 60439-1



SCAME ALSO PROVIDES CUSTOMIZED CONFIGURATIONS ON REQUEST

> BATTERIES OF INTERLOCKED SOCKETS ADVANCE GRP SERIES

The **ADVANCE GRP** product line includes a series of 16A, 32A, 63A, 125A interlocked sockets (compliant with the standards EN60309-4). All the products are made of thermoset fiberglass-reinforced polyester material to guarantee outstanding resistance to weather and chemical agents.

Reference standards: EN 60309-4 / EN 60309-1

I-Device



An electronic device controls (*Intelligence Device*) the status of the interlocked socket, monitoring the electrical functionality:

- operation of the signalling and control card is guaranteed even when the load is not connected;

● INDICATOR LIGHT ON

- indicates that the fuses are not breaking and all the phases are present;
- indicates that the socket outlet is powered correctly;

⚡ INDICATOR LIGHT FLASHING

- signals the breaking of one or more fuses;
- signals the absence of a phase*;

○ INDICATOR LIGHT OFF

- indicates that the socket outlet is not powered.

I-Remote



A device which, combined with the I-DEVICE, allows remote transmission of the socket's state (lack of a phase or breaking of one or more fuses).

** for single-phase products in the event of phase/neutral loss led signaling appears off.*

Lockable

555

390

555

520

Example of a BATTERIES: sockets and consumer units in thermoset material assembled on a plate (dimensions in mm)

SCAME ALSO PROVIDES CUSTOMIZED CONFIGURATIONS ON REQUEST

Products for CONTAINERS

> GRP DISTRIBUTION PANEL

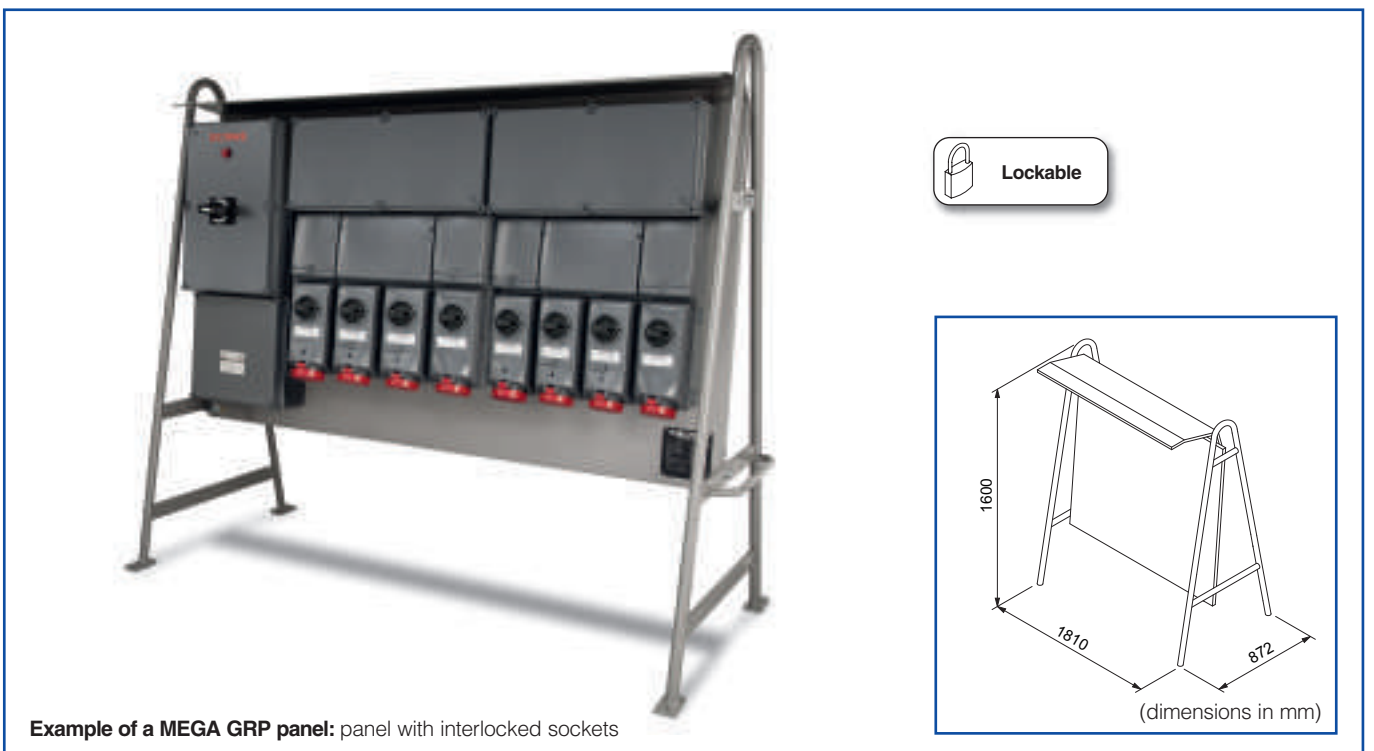
Equipped with a sturdy self-supporting metal structure in scratch-resistant painted steel with protective roof, the **MEGA Series** panels are provided for the distribution of electricity with installed powers from 90 kW to 370 kW. The **MEGA Series** distribution panels are perfectly suited for the installation of the **ADVANCE GRP Series** products. Junction boxes in thermoset material suited to contain

the main terminal blocks.

Consumer units for the installation of the protective devices (automatic and residual-current circuit breakers). Main protection by means of a lockable switch disconnecter or circuit breaker.

Degree of protection: IP55

Reference standards: EN 60439-4 / EN 60439-1



SCAME ALSO PROVIDES CUSTOMIZED CONFIGURATIONS ON REQUEST

> ADVANCE GRP INTERLOCKED SOCKETS - CHARACTERISTICS



OUTSTANDING HEAT AND FIRE RESISTANCE

The fiberglass-reinforced polyester used in ADVANCE GRP guarantees excellent heat and fire resistance: this material does not propagate flames, emit halogens or smoke.



OUTSTANDING IMPACT RESISTANCE

The impact resistance of the casings is higher than 20J (IK10), even under limit temperature conditions (-40°C +60°C).



RESISTANCE TO CHEMICAL AGENTS

These sockets have superior resistance to aggressive chemical substances, saline solutions, diluted acids, hydrocarbons, mineral oils, alcoholic substances.



RESISTANCE TO ATMOSPHERIC AGENTS

The dual degree of protection IP66 and IP67 (IP66 for 125A) guarantees an excellent seal against the ingress of solid objects or liquids in the enclosures.

Products for CONTAINERS

> PLUGS AND SOCKETS

The **OPTIMA Series** offers mobile plugs and sockets as well as flush and wall-mounted plugs and sockets for 32A currents with degree of protection IP66/IP67.

CHARACTERISTICS

External cable stay with tulip clamping having IP66/IP67 cable gland functions.

Quick opening/closing system for the hand grip of the relative module in stainless steel (SNAP-ON device), making the wiring and inspection easier.

All the contacts are nickel-plated for greater resistance to wear and oxidation.

Reference standards: EN 60309-1 / EN 60309-2



PLUG



3P+E - 380/440V
218.32364
3h

CONNECTOR



3P+E - 380/440V
318.32464
3h

FLUSH-MOUNTED PLUG



3P+E - 380/440V
248.32964
3h

FLUSH-MOUNTED SOCKET



3P+E - 380/440V
418.32664
3h

SURFACE MOUNTED SOCKET

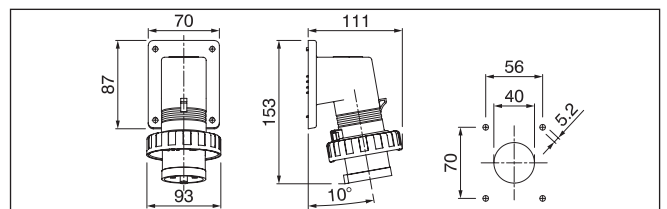
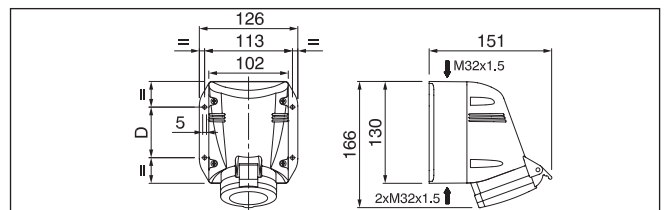
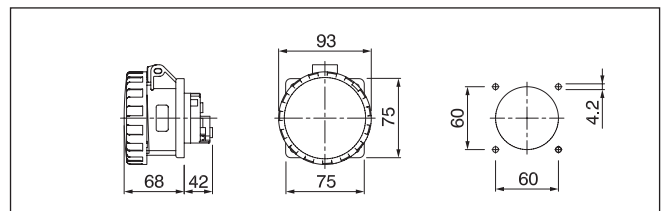
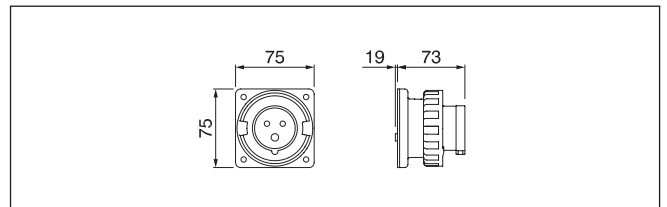


3P+E - 380/440V
518.32564T
3h
CABLE SLEEVES: M32

SURFACE MOUNTED PLUG



3P+E - 380/440V
247.16964
3h



Spare-part accessories on page 11.

(dimensions in mm)



> HEAVY DUTY OPTIMA SERIES

32A 3P+E Connectors and plugs characterized by outstanding strength, heat resistance (IK10) and resistance to chemical agents such as oils, hydrocarbons and saline solutions.


These products complete the range of **ADVANCE GRP** interlocked sockets characterized by the same performance levels.

All the contacts are nickel-plated for greater resistance to wear and oxidation.

Reference standards: EN 60309-1 / EN 60309-2

PLUG



3P+E - 380/440V
218.32364.KX
 3h

CONNECTOR



3P+E - 380/440V
318.32464.KX
 3h

> ACCESSORIES

CAP
 FOR PLUGS



CAP 32A - 3P+E
570.90324

OMNIA/OPTIMA/
 ADVANCE RING
 NUT SPARE
 PART KIT



3P+E / 32A
654.11324

CABLE
 GLANDS



PG 16: **805.3354**
 PG 21: **805.3355**

Products for CONTAINERS

> FLUSH AND SURFACE MOUNTED SOCKETS WITH INTERLOCK

The **OMNIA Series**, available in the surface mounted and flush-mounted versions without protection devices, is suited for installations in industrial environments and the services sector due to its compact size.

CHARACTERISTICS

Rated current: 32A

Degree of protection: IP67

Breakthrough openings for cable input on the base with the following dimensions:

Upper wall: n.1 PG 21 Ø29mm
n.2 PG 16 Ø23mm

Lower wall: n.1 PG 21 Ø29mm

Side walls: n.2 PG 16 Ø23mm

Bottom wall: n.2 holes Ø23mm

Reference standards: EN 60309-1 / EN 60309-2



FLUSH-MOUNTED SOCKET



Lockable

3P+E - 380/440V

405.32864

 3h

SURFACE MOUNTED SOCKET

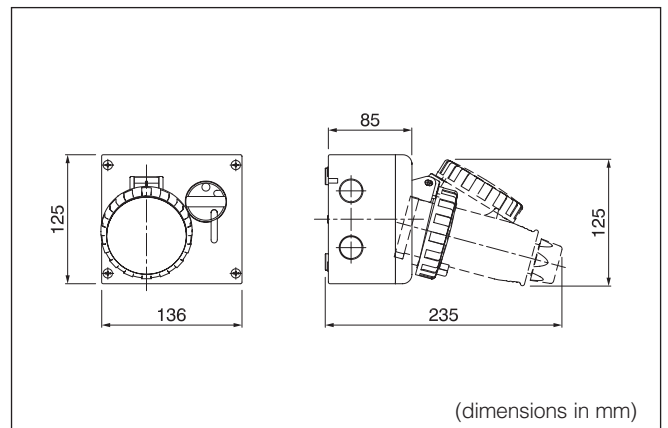


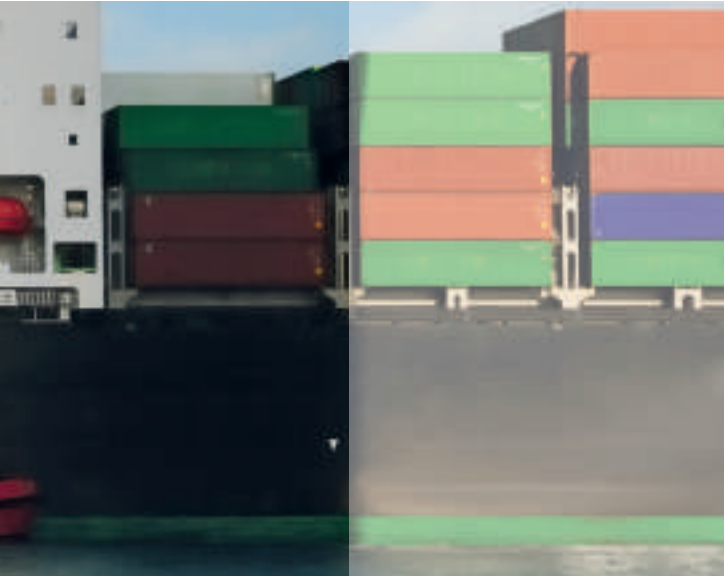
Lockable

3P+E - 380/440V

505.32864

 3h





> ADVANCE 2 SERIES

The **ADVANCE 2 Series** is characterized by interlocked sockets supplied with and without fuses and with the possibility to lock the knob in the open/closed position. Available in the standard and Heavy Duty versions with RINA certification.

CHARACTERISTICS

Degree of protection: IP66/IP67

Heat resistance: (IK07)

Reference standards: EN 60309-1 / EN 60309-2

COMPACT



3P+E - 380/440V

561.32864

3h

COMPACT



3P+E - 380/440V

564.32864

3h

LARGE

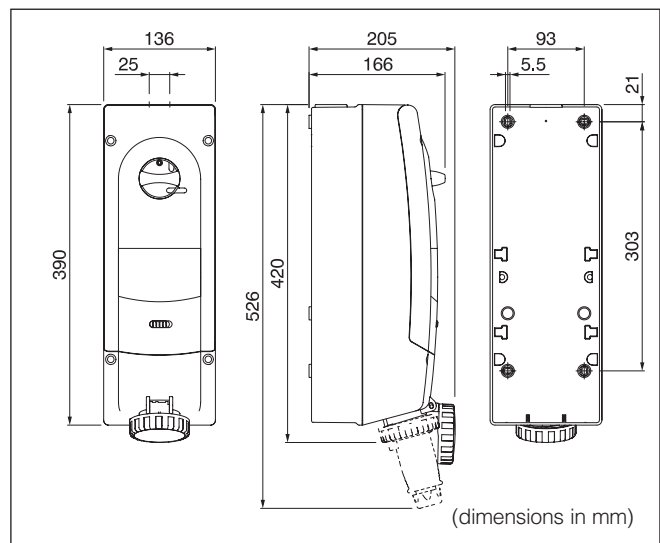
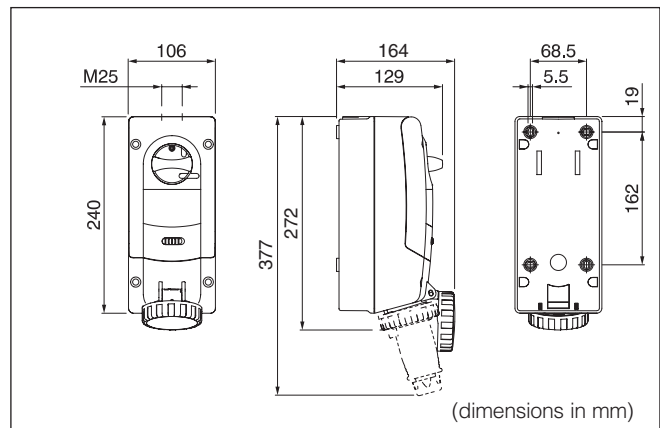
DIN GUIDE
6 Modules



3P+E - 380/440V

568.32864

3h



Products for CONTAINERS





> ADVANCE GRP SERIES

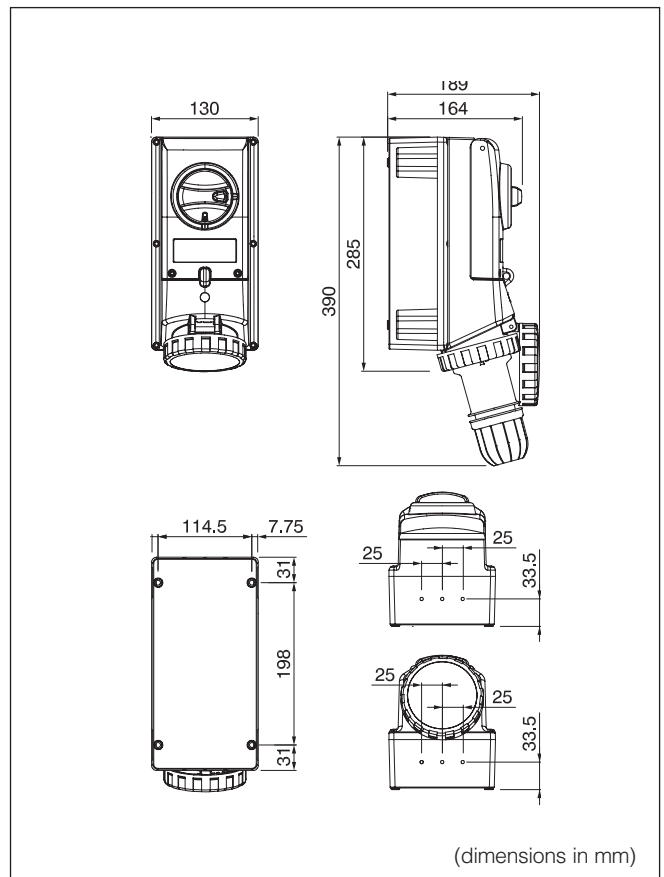
The **ADVANCE GRP** product line includes a series of 16A, 32A, 63A, 125A interlocked sockets (compliant with EN60309-4 standards) and the casings to contain them. It's the most complete range of interlocked sockets produced in GRP (*Glass Reinforced Polyester*) thermosetting material.

A unique feature which enhances the exceptional mechanical strength of **ADVANCE GRP** products is the **SMC** (*Sheet Moulding Compound*) production process used for the casings.

SMC is a technology which uses exclusively non-woven sheets, pre-impregnated with polyester resin. This method consists in preparing the sheet material inside a mould which, equipped with a negative mould, presses the composite so as to allow compaction.



	<p>WITHOUT FUSE HOLDER</p> 	<div style="border: 1px solid black; border-radius: 10px; padding: 5px; display: inline-block;">  Lockable </div> <p>3P+E - 380/440V 402.32864 3h</p>
	<p>WITHOUT FUSE HOLDER</p> 	<div style="border: 1px solid black; border-radius: 10px; padding: 5px; display: inline-block;">  Lockable </div> <p>3P+E - 380/440V 403.32864 3h</p>



> ACCESSORIES

	<p>ADVANCE GRP RING NUT SPARE PART KIT</p> 	<p>3P+E / 32A 654.12324</p>
--	---	---



CHARACTERISTICS

- Outstanding heat and fire resistance
- Outstanding impact resistance
- Outstanding resistance to chemical agents
- Outstanding weather resistance

Reference standards:

EN 60309-1 / EN 60309-2 / EN 60309-4

**BASE FOR ONE
SOCKET**



32A - 260x130mm
579.5100

**BASE FOR ONE
SOCKET
+ DERIVATION BOX**



32A - 460x130mm - 9W
579.5110

**BASE FOR ONE
SOCKET
+ CONSUMER
UNITS**



32A - 460x130mm - 9W - module DIN 6
579.5111

**BASE FOR TWO
SOCKETS
+ DERIVATION BOX**



32A - 460x260mm - 16W
579.5120

**BASE FOR
TWO SOCKETS
+ CONSUMER
UNITS**



32A - 460x260mm - 16W - module DIN 13
579.5121

ZP00776-GB-1
8 001636 410449



ScameOnLine
www.scame.com
export@scame.com



SCAME PARRE S.p.A.
VIA COSTA ERTA, 15
24020 PARRE (BG) ITALY
TEL. +39 035 705000
FAX +39 035 703122

